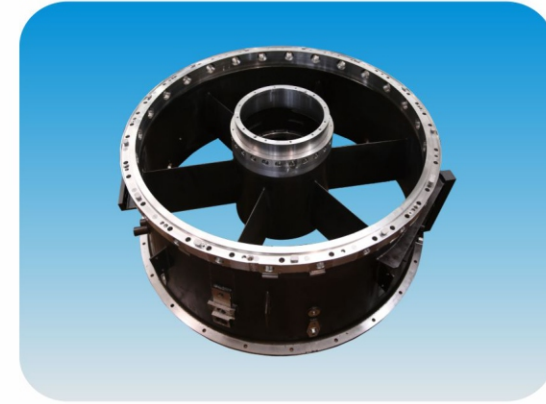


你 给 我 机 会 我 给 你 喜 悦

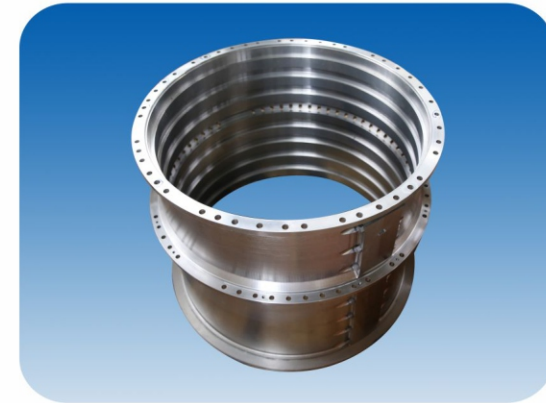
CGT25000产品展示



前机匣
Front Casing



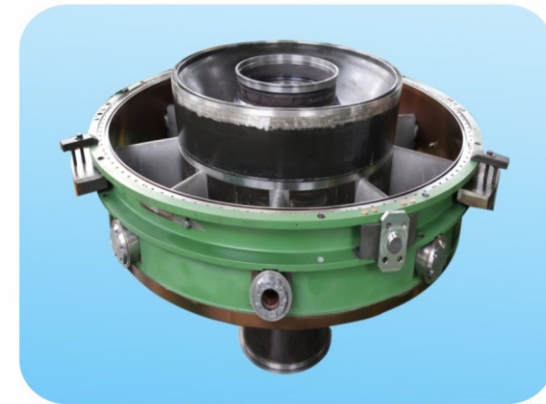
过渡段机匣
Transition Section Casing



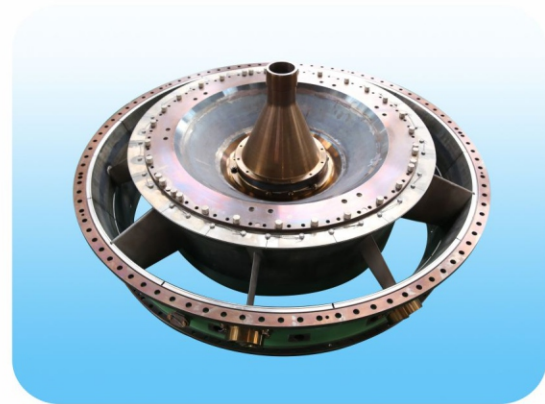
高压压气机机匣
High-pressure Compressor Casing



燃烧室内壳
Combustion Inner Wall



动力涡轮支撑环组件
Power Turbine Support Ring Component



低压涡轮支撑环组件
Low-pressure Turbine Support Ring Component

坚定做中小型燃气轮机核心部件智能制造中心
Firmly be core components intelligent manufacturing center of small and medium sized gas turbine.



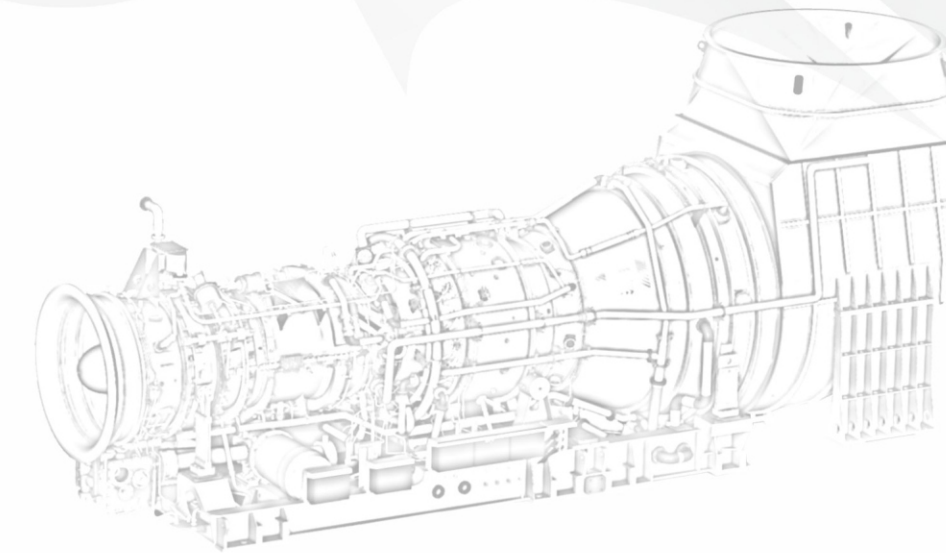
WUHAN MARINE MACHINERY PLANT CO., LTD.

地 址：中国湖北省武汉市青山区武东街九号
Address: No. 9, Wudong Street, Qingshan District, Wuhan, Hubei, China
成套设备经营部：027-68867018
Complete-Set Equipment Business Department:027-68867018
传 真：027-68867461
Fax: 027-68867461 Post Code: 430084
邮 编：430084
E-mail: whcj@wmmp.com.cn
电子邮箱：whcj@wmmp.com.cn
Website: http://www.wmmp.com.cn
网 址：http://www.wmmp.com.cn
V : DXYB2010HG-4



燃气轮机核心部件 配套方案

你 给 我 机 会 我 给 你 喜 悦



CSMC

武汉船用机械有限责任公司

你 给 我 机 会 我 给 你 喜 悦

生产能力 Production Capacity

公司凭借雄厚的技术积累，已经攻克了燃气轮机机匣和支撑类零件的工艺难点，成功完成了30MW中小型燃气轮机的机匣及支撑类零件的制造，掌握了中小型燃气轮机机匣及支撑类零件制造的核心技术。

The company relies on the strong technical accumulation, has overcome the gas turbine casing and supporting parts process difficulties, successfully completed the 30 MW of small and medium-sized gas turbine casing and the supporting parts, mastered the core technology of small and medium-sized gas turbine casing and the supporting parts manufacturing.

你 给 我 机 会 我 给 你 喜 悦

产业化规划 Industry Planning

公司正在规划建设燃气轮机机匣及支撑类产品数字化车间，占地30000m²，计划达到年产共45套燃气轮机机匣及支撑类零件的制造能力。

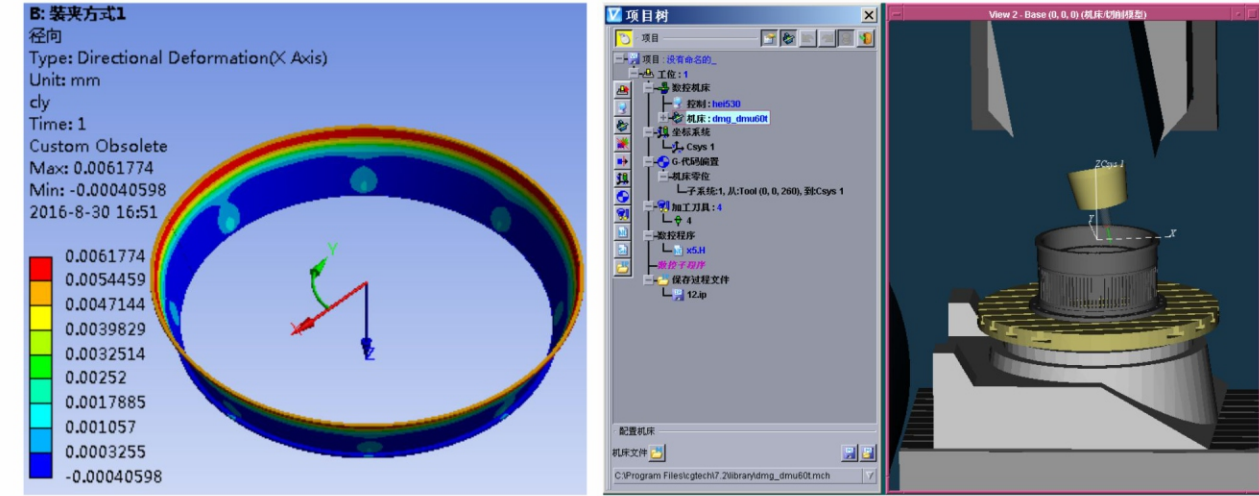
The company is planning to build a gas turbine casing and supporting products digital workshop, covering an area of 30000m², plans to reach the annual manufacturing consists of 45 sets of gas turbine casing and supporting parts.



工艺设计 Technological Design

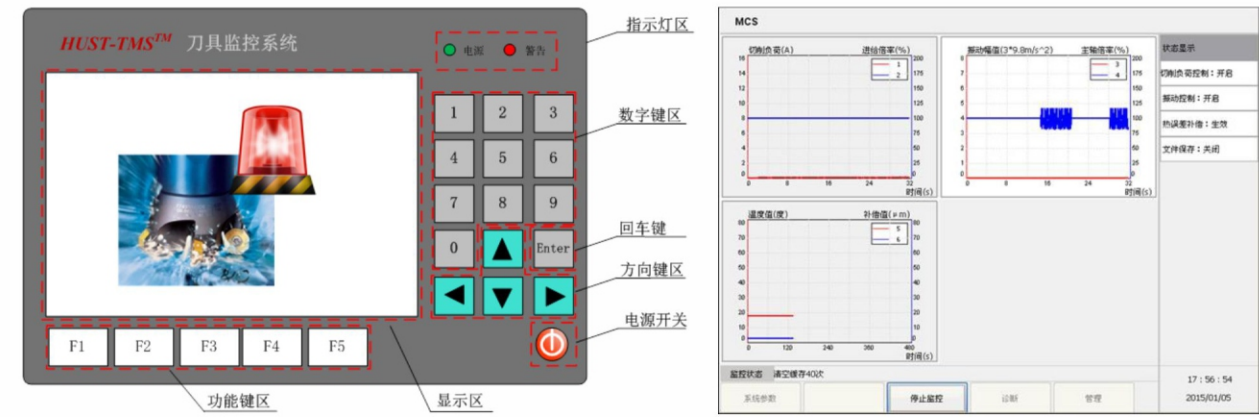
公司作为国家认定高新技术企业，建有国家级技术中心、湖北省博士后产业基地和武汉市船舶配套技术研发中心，拥有500余人的科研技术团队，产品研发和创新实力雄厚。

The company relies on the strong technical accumulation, has overcome the gas turbine casing and supporting parts process difficulties, successfully completed the 30 MW of small and medium-sized gas turbine casing and the supporting parts, mastered the core technology of small and medium-sized gas turbine casing and the supporting parts manufacturing.



受力变形分析
analysis of the deformation under force

数控模拟加工
simulation of CNC machining



刀具磨损状态监测系统
monitoring system of cutter wear

加工振动监控模块
monitoring module of machining vibration

制造能力-加工设备 Manufacturing Capacity

为满足燃气轮机机匣及支撑类零件的制造需求，公司投入加工中心、数控龙门铣、数控镗铣床、数控立车等关键设备40余台，同时引进了电子束焊机、退磁机、真空炉等专用设备，具备雄厚的加工实力。

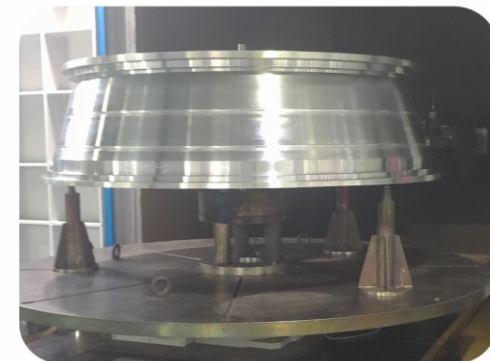
In order to meet gas turbine casing and the supporting parts manufacturing requirements, our company put into processing control milling machine, CNC boring and milling machine, CNC vertical lathe and other heavy equipment more than 40 units, at the same time, introduces the motor, demagnetization machine, vacuum furnace, and other special equipment, with strong processing power.



DMU340P (德马吉) 卧式数控加工中心
DMU340P Horizontal NC Machining Center



数控立车
CNC vertical lathe



电子束焊机
electron-beam welding machine



耐高温油漆固化炉
high temperature resistant paint curing furnace



真空热处理炉
vacuum heat treatment furnace

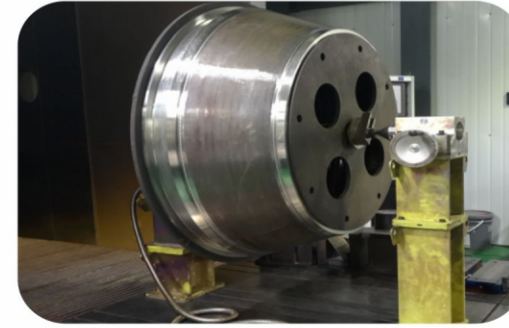


数控旋压机
CNC spinning machine

制造能力-特种工艺 Manufacturing Capacity

电子束焊 Electron-beam Welding

厚度：1mm~45mm
直径：Φ50~Φ2100mm
材料：不锈钢、高温合金
Thickness: 1mm~45mm
Diameter: Φ50~Φ2100mm
Material: stainless steel、high temperature alloy



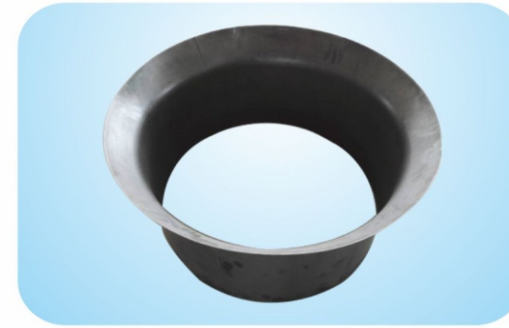
冷冲压 Cold Stamping

厚度：1mm~5mm
直径：Φ50~Φ1500mm
材料：不锈钢、高温合金
Thickness: 1mm~5mm
Diameter: Φ50~Φ1500mm
Material: stainless steel、high temperature alloy



旋压 Flow Spinning

厚度：1mm~4mm
直径：Φ40~Φ1300mm
材料：不锈钢、高温合金
Thickness: 1mm~4mm
Diameter: Φ40~Φ1300mm
Material: stainless steel、high temperature alloy



检验能力 Detection Ability

公司配置有各类检测仪器设备，具备从零部件尺寸、形状等几何量的测量到材料理化检验分析全套完备的测量测试能力。

The company has all kinds of testing instruments and equipment configuration, has from the amount of geometry size, shape of parts to the material physical and chemical inspection analysis a full set of complete measurement test ability.

